

Our Lady of Kapiti Church Parish Presentation

05.05.2016



Agenda

❖ Story so far

❖ Preliminary Design

❖ Next Steps

❖ Questions

❖ Parish Prayer

1

Project Timeline

Jun 13

Parish of Our Lady of Kapiti formed

- ***Parish Councils and Finance Committees combined***
- ***Started work on Pastoral Plan***

May 14

Pastoral Plan in place

- ***Development Group formed***

Jun 14

Development Group Terms of Reference agreed

Oct 14 – Dec 14

Updates and Parish meetings re future directions

2

Project Timeline

<i>Jan 15</i>	<i>Business Case for new church and relocated school presented to ADW</i>
<i>Jun 15</i>	<i>Land purchase at 20 Milne Drive completed Design Symposium for Church</i>
<i>Oct 15</i>	<i>School design signed off</i>
<i>Dec 15</i>	<i>Resource consent granted</i>
<i>Feb 16</i>	<i>Building consent for school granted Site blessing Construction commenced</i>

What's been happening since we last presented

September / October

- Presented conceptual design to Parish
- Gathered Parish feedback - collated into “List of 172 items”
- Redrew original design to reflect
 - SPA internal review
 - Requested changes
- Estimated construction cost - \$6.3m

What's been happening since we last presented?

November / December

- Commenced technical review
 - Is it structurally sound?
 - Can we build it?
 - Is it affordable?
 - Can it be easily maintained in the long term?

Technical Team



Architects
Builders
Structural Engineer
Services Engineer
Fire Engineer
Quantity Surveyor
Project Manager

What's been happening since we last presented?

January / February

- Technical team recommend review of shape and form :
 - Structural integrity
 - Buildable – particularly roof and walls
 - Simpler service provision
 - Long term maintainability
- Revisited other simpler shapes – triangles, rectangles

Technical Team



Architects
Builders
Structural Engineer
Services Engineer
Fire Engineer
Quantity Surveyor
Project Manager

6

What's been happening since we last presented?

March / April

- Develop rectangular option
 - Simpler construction (especially roof and walls)
 - Remove design complexity
 - Better use of Admin areas
- Value Engineering outcome - \$700k saving
- Estimated construction cost now \$5.6m
- Reviewed new option vs “list of 172 items”

Technical Team

**Architects
Builders
Structural Engineer
Services Engineer
Fire Engineer
Quantity Surveyor
Project Manager**

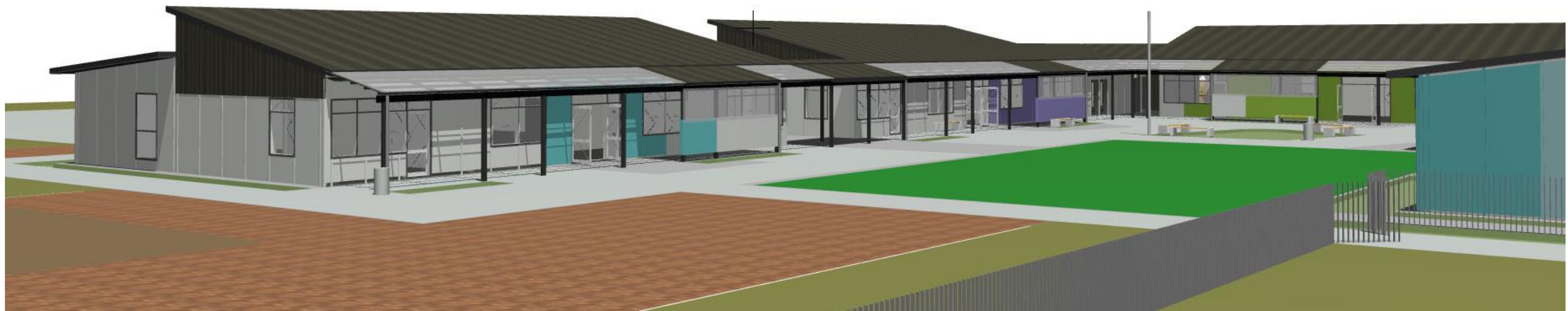
**Steering Group Members
Design Team**



School Administration



School Senior Block



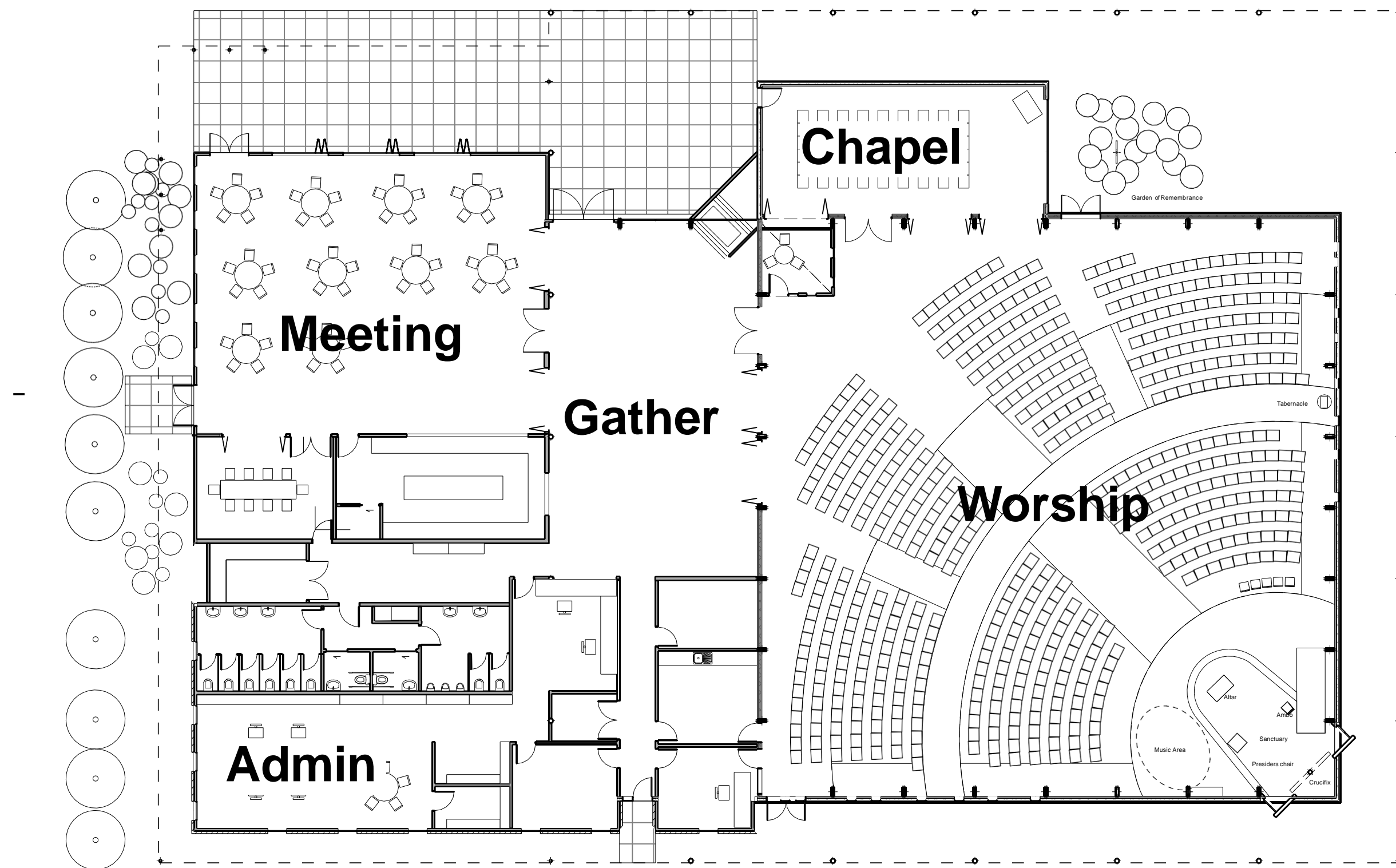
Hall

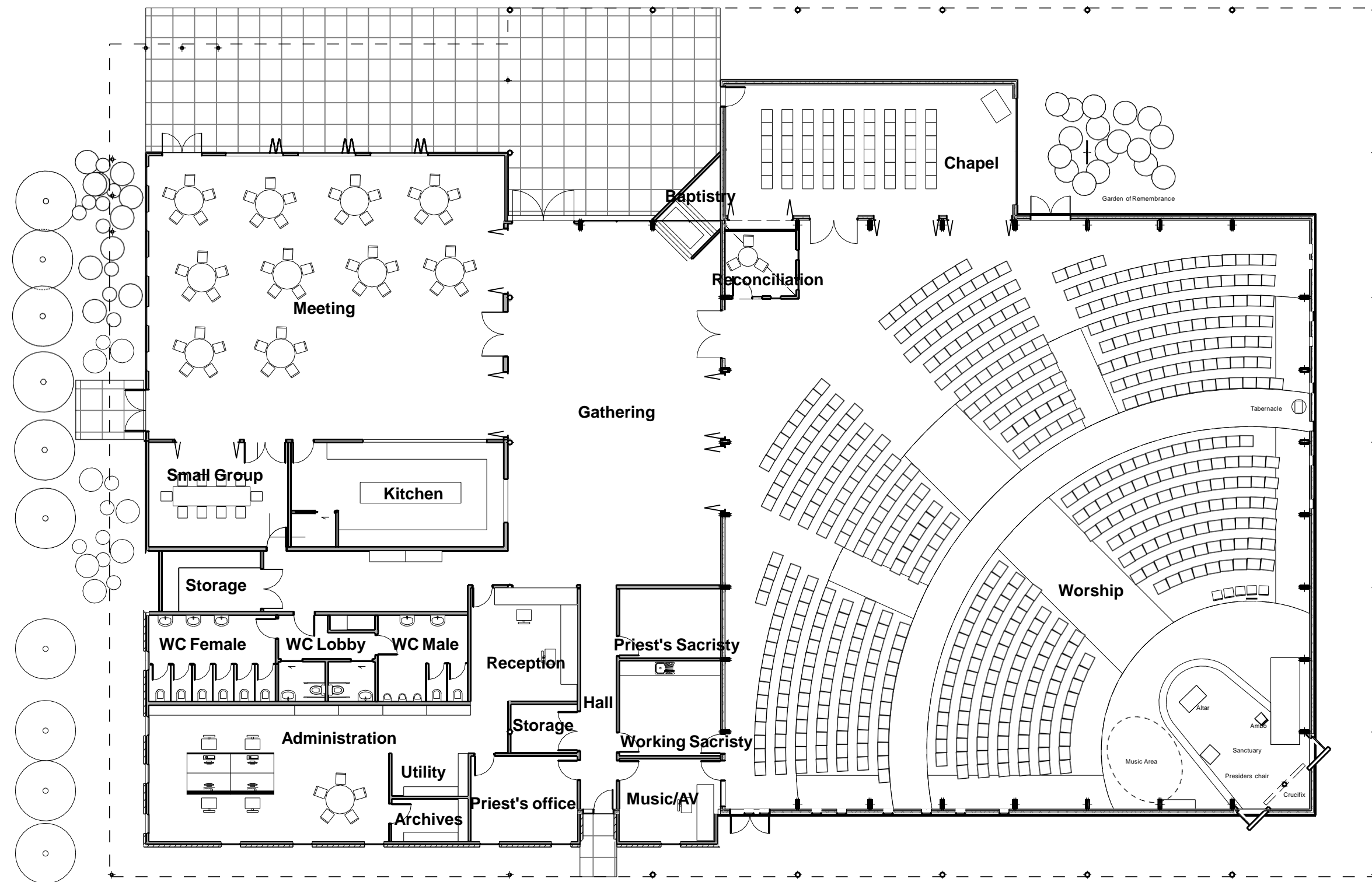


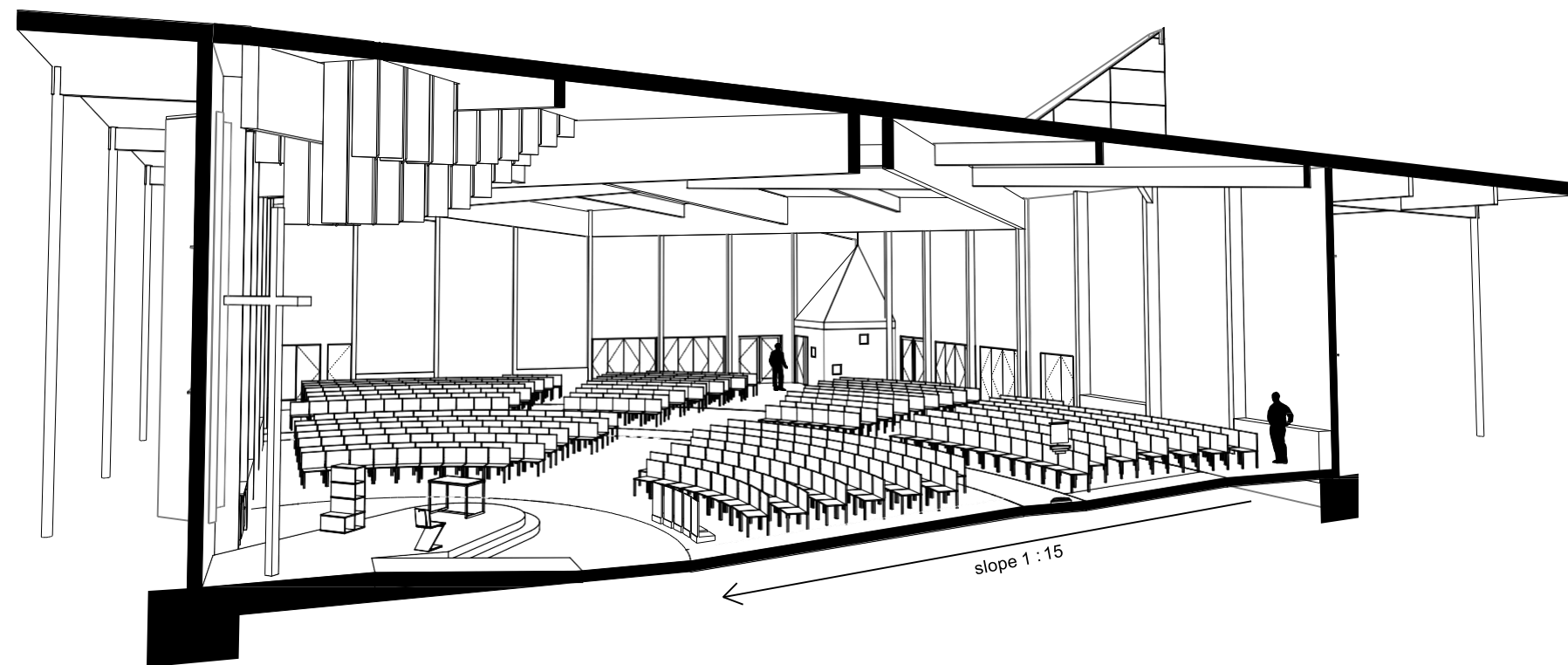
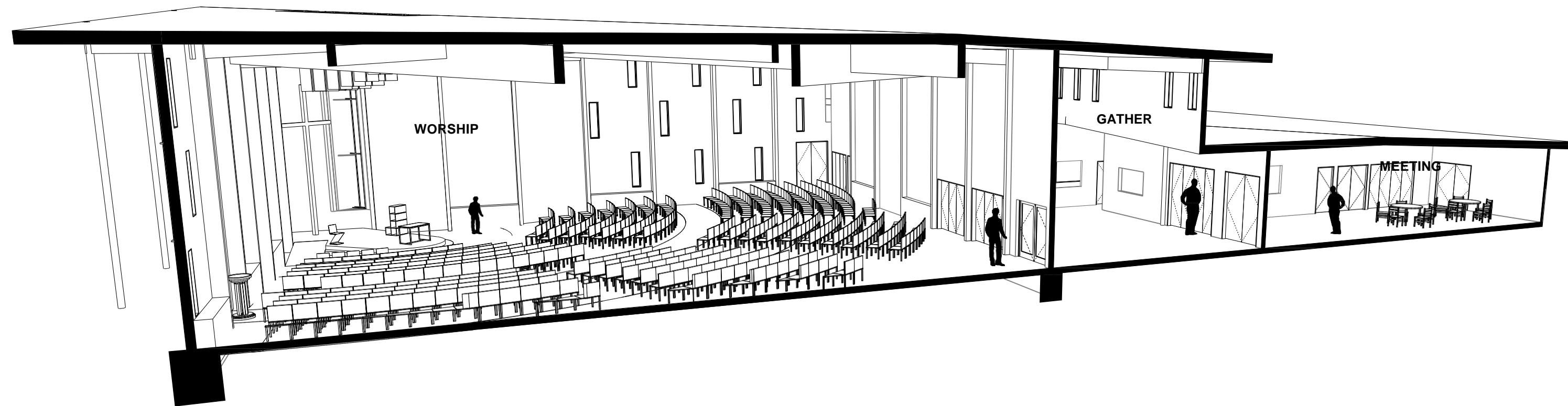
Mary	Cloak	Weave
	 	 

Site, Landscaping + Circulation











View from entrance court



Our Lady of Kapiti



- ❖ Incorporate Parish feedback on Preliminary Design
- ❖ Commence preparation of proposal to Archdiocese to proceed
 - ❖ Design documents
 - ❖ Programme of work
 - ❖ Funding plan
- ❖ Commence major funding drive
 - ❖ Asset sales to date (settlement by Feb 17) will finance
 - land purchase
 - site establishment
 - ½ share of Hall
 - ❖ Significant funding boost required to proceed with Church design

Questions ???

Feedback to : ladykapiti@gmail.com

Parish Prayer (Ephesians 3)

**Out of your infinite glory, may you give us the
power, through your Spirit, for our hidden selves
to grow strong,**

**so that Christ may live in our hearts through
faith and then, planted in love and built on love,**

**we will, with all the saints have strength to
grasp the breadth and the length, the height
and the depth ;**

Until, knowing the love of Christ, which is beyond all knowledge, we are filled with the utter fullness of God.

Glory be to God, whose power, working in us, can do infinitely more than we can ask or imagine.

Glory be to God from generation to generation in the Church and in Christ Jesus for ever and ever.

Amen